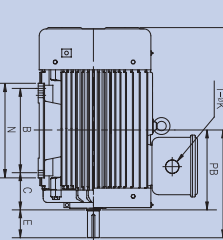
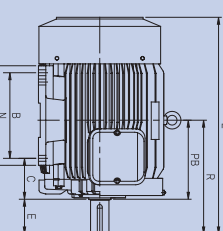
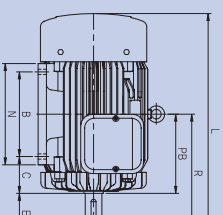
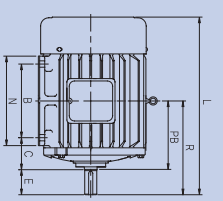
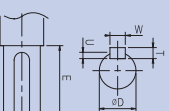
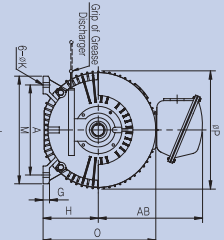
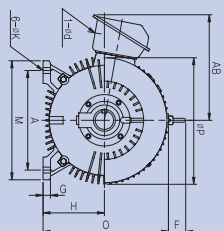
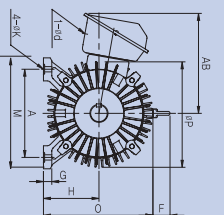
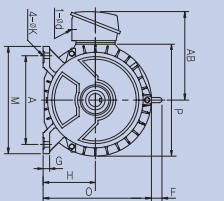


4)

$$(\quad)$$
[SHAFT
EXTENTION]

[적용공차]
KS C 4202
JEM 1400

<FIG 1>

<FIG 2>

<FIG 3>

<FIG 4>

| | | | | FIG No. | BODY | | | | | | | | | | | | | | | | SHAFT | | | | | | (kg) | | |
|------|------------|------------|------------|---------|------|-----|-----|-----|-----|------|------|-----|-----|-----|-----|-----|-----|-----|-----|-----|-------|------|------|-----|-----|------------|------------|------------|-----|
| | | | | | [mm] | | | | | | | | | | | | | | | | | | | | | | | | |
| | 2P | 4P | 6P | H | A | B | C | E | L | M | N | O | øP | R | PB | F | G | AB | ød | øK | øD | W | U | T | 2P | 4P | 6P | | |
| 80M | 0.8 | 0.8 | - | 1 | 80 | 125 | 100 | 50 | 40 | 264 | 150 | 125 | 168 | 174 | 140 | 100 | - | 10 | 144 | 22 | 10 | 19/6 | 6 | 3.5 | 6 | 16 | 16 | - | |
| 90L | 1.5 2.2 | 1.5 | 0.8 | 1 | 90 | 140 | 125 | 56 | 50 | 317 | 175 | 150 | 186 | 192 | 169 | 119 | - | 10 | 166 | 22 | 10 | 24/6 | 8 | 4 | 7 | 20 24 | 24 | 26 | |
| 100L | - | 2.2 | 1.5 | 1 | 100 | 160 | 140 | 63 | 60 | 358 | 200 | 174 | 208 | 216 | 193 | 133 | - | 12 | 168 | 22 | 12 | 28/6 | 8 | 4 | 7 | - | 32 | 35 | |
| 112M | 3.7 | 3.7 | 2.2 | 1 | 112 | 190 | 140 | 70 | 60 | 369 | 226 | 172 | 232 | 240 | 200 | 140 | 42 | 13 | 187 | 22 | 12 | 28/6 | 8 | 4 | 7 | 43 | 43 | 43 | |
| 132S | 5.5 7.5 | 5.5 | 3.7 | 1 | 132 | 216 | 140 | 89 | 80 | 444 | 250 | 175 | 269 | 280 | 239 | 159 | 42 | 15 | 213 | 42 | 12 | 38/6 | 10 | 5 | 8 | 64 73 | 66 | 66 | |
| 132M | - | 7.5 | 5.5 | 1 | 132 | 216 | 178 | 89 | 80 | 484 | 250 | 215 | 269 | 280 | 258 | 178 | 42 | 15 | 213 | 42 | 12 | 38/6 | 10 | 5 | 8 | - | 80 | 80 | |
| 160M | 11 15 | 11 | 7.5 | 1 | 160 | 254 | 210 | 108 | 110 | 595 | 300 | 250 | 316 | 323 | 323 | 213 | 51 | 18 | 265 | 45 | 15 | 42/6 | 12 | 5 | 8 | 115 124 | 117 | 145 | |
| 160L | 19 | 15 | 11 | 1 | 160 | 254 | 254 | 108 | 110 | 639 | 300 | 300 | 316 | 323 | 345 | 235 | 51 | 18 | 265 | 45 | 15 | 42/6 | 12 | 5 | 8 | 124 | 139 | 172 | |
| 180M | 22 22 | 18.5 15 | 15 | 1 | 180 | 279 | 241 | 121 | 110 | 645 | 321 | 280 | 366 | 365 | 352 | 242 | 60 | 20 | 286 | 45 | 15 | 48/6 | 14 | 5.5 | 9 | 195 185 | 177 | 190 | |
| 180L | 30 | 30 22 | 18.5 22 | 1 | 180 | 279 | 279 | 121 | 110 | 690 | 321 | 318 | 366 | 365 | 371 | 281 | 60 | 20 | 286 | 45 | 15 | 55/6 | 16 | 6 | 10 | 210 | 210 | 210 | |
| 200L | 37 45 | 37 45 | 30 37 | 2 | 200 | 318 | 305 | 133 | 140 | 820 | 400 | 365 | 396 | 416 | 426 | 286 | 60 | 25 | 368 | 80 | 19 | 60/6 | 18 | 7 | 11 | 285 380 | 290 250 | 250 335 | |
| 225S | 55 | - | - | 3 | 225 | 356 | 286 | 311 | 149 | 110 | 805 | 432 | 375 | 463 | 475 | 305 | 60 | 30 | 425 | 80 | 19 | 55/6 | 16 | 6 | 10 | 375 | - | - | |
| 250S | 75 | - | - | 3 | 225 | 356 | 311 | 149 | 140 | 835 | 432 | 375 | 463 | 475 | 445 | 305 | 60 | 30 | 425 | 80 | 19 | 65/6 | 18 | 7 | 10 | - | 340 | 445 | |
| 250S | - | 75 | 55 | 3 | 250 | 406 | 349 | 311 | 168 | 110 | 855 | 485 | 444 | 511 | 522 | 434 | 324 | 71 | 30 | 428 | 80 | 24 | 55/6 | 16 | 6 | 10 | 490 | - | 450 |
| 250M | 90 | - | - | 3 | 250 | 406 | 349 | 311 | 168 | 110 | 855 | 485 | 444 | 511 | 522 | 434 | 324 | 71 | 30 | 428 | 80 | 24 | 55/6 | 16 | 6 | 10 | 510 | - | - |
| 280S | 110 | - | - | 4 | 280 | 457 | 368 | 311 | 168 | 140 | 885 | 485 | 444 | 511 | 522 | 464 | 324 | 71 | 30 | 428 | 80 | 24 | 75/6 | 20 | 7.5 | 12 | - | 520 | 495 |
| 280M | - | 110 | 90 | 4 | 280 | 457 | 368 | 311 | 190 | 110 | 1080 | 546 | 580 | 589 | 600 | 484 | 374 | 110 | 32 | 528 | 80 | 24 | 55/6 | 16 | 6 | 10 | 790 | - | - |
| 365S | - | 132 | 110 | 4 | 280 | 457 | 368 | 190 | 110 | 1080 | 546 | 580 | 589 | 600 | 510 | 400 | 110 | 32 | 528 | 80 | 24 | 85/6 | 22 | 9 | 14 | - | 810 | 860 | |
| 365S | - | 160 | - | 4 | 280 | 457 | 368 | 190 | 170 | 1140 | 546 | 580 | 589 | 600 | 570 | 400 | 110 | 32 | 528 | 80 | 24 | 85/6 | 22 | 9 | 14 | - | 900 | 950 | |
| 365S | - | 160 | - | 4 | 315 | 508 | 406 | 216 | 170 | 1231 | 648 | 605 | 635 | 650 | 589 | 419 | 110 | 35 | - | 80 | 28 | 95/6 | 25 | 9 | 14 | - | 1250 | - | |